

# Stone Top Guide

## Procedures for Sealing & Cleaning Stone Tops

### Stone Bench Tops, Bar Tops & Tables

The timeless beauty of natural stone has made this material a favourite choice for bench tops, table tops, bar tops and outdoor tables. Natural stone is porous & will require sealing and proper care & maintenance to help preserve its look.

Coasters should be used to help prevent stains, scratches & etch marks. All spills should be wiped up immediately to help avoid staining or etching of the stone surface. Abrasive or acid based products should NOT be used.

#### Sealing - Quick Guide Only. Read product label first



**Step 1** - Clean the surface to be sealed and allow to dry.



**Step 2** - Wipe surface dry with clean paper or cloth towels.



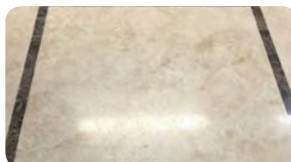
**Step 3** - Apply sealer to clean surface. Remove any excess.



**Step 4** - Thoroughly work in the sealer to the stone surface.



**Step 5** - After 5-10 minutes, wipe surface completely dry.



**Step 6** - Stone surface sealed with no visible residue.

#### Stain Removal - Quick Guide Only. Read product label first



Porous natural stone will stain from grease, oil, coffee, tea etc



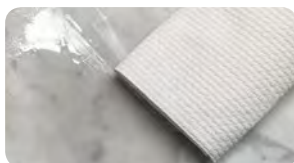
**Step 1** - Apply Poultice Plus to the stained area (overlap stain).



**Step 2** - Allow to dry then remove with plastic spatula.



**Step 3** - Mist clean water over dried paste residue.



**Step 4** - Scrub with white nylon pad, then rinse & wipe dry.



After stain has been removed, seal with Aqua-Seal STS sealer.

#### Etch & Scratch Removal - Quick Guide Only. Read product label first



Acid based products e.g. wine, vinegar, lemon juice etc. will etch stone surfaces.



**Step 1** - Apply a small amount of Re-Shine™ directly to the etched or scratched area.



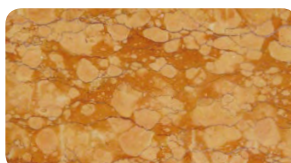
**Step 2** - Mist a small amount of water then buff with cotton or terry towel.



**Step 3** - Buff until the cream becomes clear & nearly dries; DO NOT ALLOW TO DRY



**Step 4** - Re-wet surface with clean water to flush, then polish dry with clean towels.



Polished surface restored and light scratches & etch marks removed. Re-seal area.

# Stone Top Guide

Products for Sealing, Cleaning & Re-Polishing

## Sealing - Natural or Enhanced Look



### **Spray'N'Seal™** Premium Aerosol Sealer

- Maximum Stain Resistance Against Oil & Food;
- Spray Application - Non Yellowing - Non Coating;
- Fast Drying - UV Resistant - Inhibits Mould & Mildew.



### **Aqua-Seal Gold+™** Premium Natural Look Sealer - Rapid Seal

- Maximum Stain Resistance Against Oil & Food;
- Easy To Apply - Non Yellowing - Non Coating;
- Rapid Seal™ - UV Resistant - Inhibits Mould & Mildew.



### **Enhance'N'Seal™** Premium Sealer & Colour Enhancer

- Darkens - Enhances - Rejuvenates Colour;
- Maximum Stain Resistance Against Oil & Food;
- Poly Seal™ - UV Resistant - Inhibits Mould & Mildew.

## Maintenance - Spray & Wipe Cleaners



### **AquaGuard™** Cleaner & Re-Sealer

- One Step Spray, Clean & Re-Seal Formula;
- Boost Existing Sealer Performance & Longevity;
- Ideal For Every Day Use - Helps Protect Sealed Stone;



### **Clean'N'Gleam™** Clean & Shine Bench Top Cleaner

- One Step Spray, Clean & Shine Formula;
- Adds Lustre & Enhances Look of Surface;
- Ideal For Every Day Use - Helps Protect Stone Surface;

## Problem Solving - Stain Removal



### **Poultice Plus™** Stain Removing Paste

- Pre Mixed Paste - Easy To Use - No Fumes;
- Helps Remove Oil, Wine, Coffee and Tea Stains;
- Safe On Natural Stone, Porcelain Tile & Concrete;

## Stone Restoration - Etch & Scratch Removal



### **Re-Shine™** Stone Re-Polishing Cream

- Restore Shine - Re Polish Etch Marks & Scratches;
- Easy To Use - Ideal For Small Areas and Table Tops;
- Use for Polished Marble, Limestone and Travertine.



### **Hone 400™** Stone Honing Powder

- Easy To Use - Non Acidic - Honing Powder;
- Produce An Even, Flat, Non Reflective Finish;
- Remove Etch Marks, Scratches & Wear Patterns.