

PS29 - Repolish Stone - Large Areas

Repolish Large Areas of Lightly Etched or Scratched Calcium Based Stone - Marble, Limestone, Travertine etc

PRODUCT: POLISH PRO™

- EQUIPMENT:**
- Clean water
 - Wet vac
 - Squeegee
 - Broom;
 - Hogs hair or tan pads;
 - Weighted slow speed floor machine (175-300 RPM);
 - Polish Pro™.

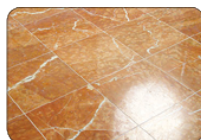


- PRECAUTIONS:**
1. Read entire label, SDS & product technical bulletin before using;
 2. Wear appropriate gloves, skin & eye protection and use in a well ventilated area or use an appropriate mask;
 3. Use when surface temperature is between 4°C and 32°C.
 4. Do not allow product to come in contact with any non-recommended surfaces;
 5. Surface must be clean and free of all surface sealers and coatings;
 6. MIX WELL BEFORE USING as product can settle.

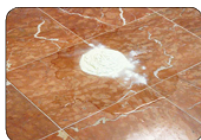
- PROCEDURE:**
1. Sweep, vacuum, or wipe surface;
 2. Slightly pre wet an area of approx 1-2m2;
 3. Add 2-3 tablespoons of Polish Pro™ to the floor;
 4. Use a weighted slow speed floor machine (175-300 RPM) with 2 x hogs hair or tan pads double stacked and then start the polishing process;
 5. DO NOT ALLOW PRODUCT TO DRY - add water or Polish Pro™ to the slurry as required;
 6. Continue until the desired effect has been achieved;
Note: Use a squeegee to check your progress;
 7. Remove the slurry with a wet vac and rinse thoroughly with clean water;
 8. Repeat process as necessary;

NOTE: Surface should then be sealed with an appropriate Aqua-Seal STS Sealer to provide stain resistance and ease ongoing maintenance - refer to our website www.aqua-seal.com.au;

SAFETY DIRECTIONS: **CORROSIVE** Wear protective gloves, eye & skin protection when using. Do not breath fumes.



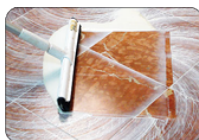
Step 1 Surface must be clean and free of all surface sealers and coatings



Step 2 Pre-wet a small area with water & add 2-3 spoons of Polish Pro™ to form a slurry.



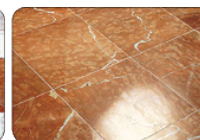
Step 3 Use a weighted slow speed scrubbing machine with hogs hair pad or tan pad.



Step 4 Remove some slurry and check on progress of the polished finish.



Step 5 When desired finish is achieved, then remove all slurry with wet vac and rinse thoroughly.



Step 6 An even, polished finish has been produced. Then seal with an Aqua-Seal sealer.

Note A: Severely scratched, damaged or worn polished stone may require professional restoration by diamond grinding.

Note B: Not suitable for some green and black marbles, granite, ceramic or porcelain tile;;

Note C: For repolishing small areas or corners and near skirtings, use Aqua Seal ReShine™. See Aqua Seal Problem Solver #20.

Note D: Use Aqua-Seal AquaGuard™ on tabletops, bench tops and other non-traffic areas to enhance the lustre of the polished finish.

This recommendation is intended as a general guideline. The actual procedure requirements, dilution ratios, dwell time etc may vary depending on type of surface, method of application and severity of the problem.

READ PRODUCT LABEL INSTRUCTIONS, TECHNICAL BULLETIN & SDS THOROUGHLY BEFORE USING. ALWAYS TEST FIRST. KEEP SURFACE CLEAN AND DRY TO REDUCE THE POSSIBILITY OF SLIP & FALL ACCIDENTS AND INJURIES